

The Modern Agrarian Ledger

A definitive mapping of India's agricultural systems, cropping seasons, and institutional evolution.



Designed for comprehensive reading
and visual reference.



Sustenance

Produces the vast majority of food grains consumed domestically.

2/3

Industry & Export

Generates vital raw materials for manufacturing (cotton, jute) and premium export goods (tea, coffee, spices).

India is fundamentally an agrarian ecosystem, with two-thirds of its entire population engaged engaged in agricultural activities.



Primitive Subsistence

Intensive Subsistence

Commercial Farming

	Primitive Subsistence	Intensive Subsistence	Commercial Farming
Scale & Land	Small patches	Uneconomical, fragmented plots	Large-scale tracts
Labour Source	Family / Community	Highly labour-intensive	Migrant / Hired labour
Inputs & Tools	Primitive tools, natural soil fertility	High doses of biochemicals	HYV seeds, chemical fertilisers, pesticides
Water Source	Completely monsoon-reliant	Irrigation-heavy	Controlled / Irrigation-heavy

The Spectrum of Commercialisation

Crop status is relative to geography. Example: Rice is a commercial crop in Punjab & Haryana, but a subsistence crop in Odisha.

Primitive Subsistence: The Ecological Loop

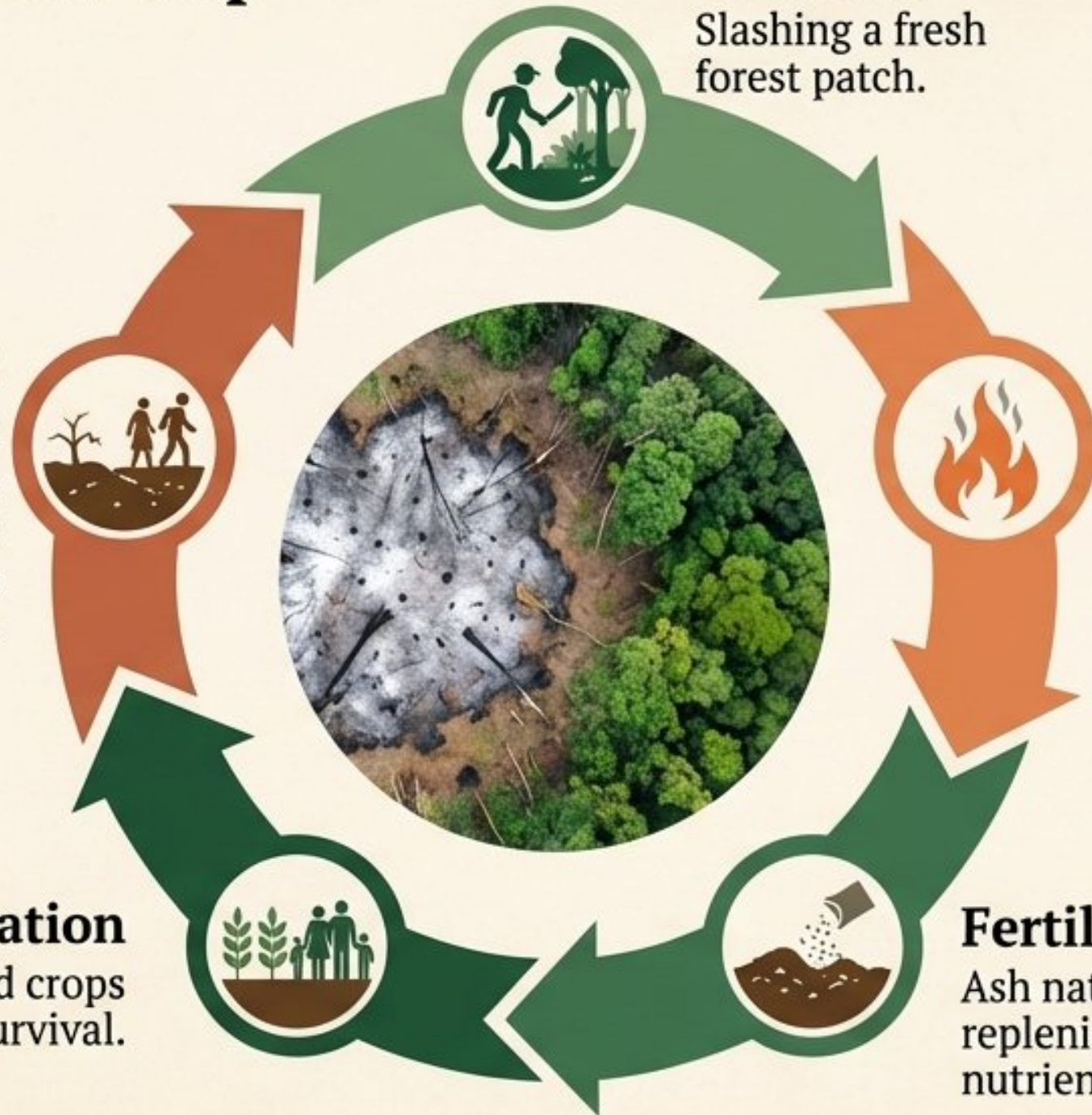
Clearance
Slashing a fresh forest patch.

Combustion
Burning the vegetation.

Fertilisation
Ash naturally replenishes soil nutrients.

Cultivation
Growing food crops for family survival.

Depletion & Migration
Soil loses fertility; farmers abandon the patch to let Nature replenish it.



The Nomenclature Map

Jhumming
(North-East: Assam, Meghalaya)

Dipa
(Bastar / Andaman)

Bewar / Dahiya
(Madhya Pradesh)

Podu
(Andhra Pradesh)

Kumari
(Western Ghats)

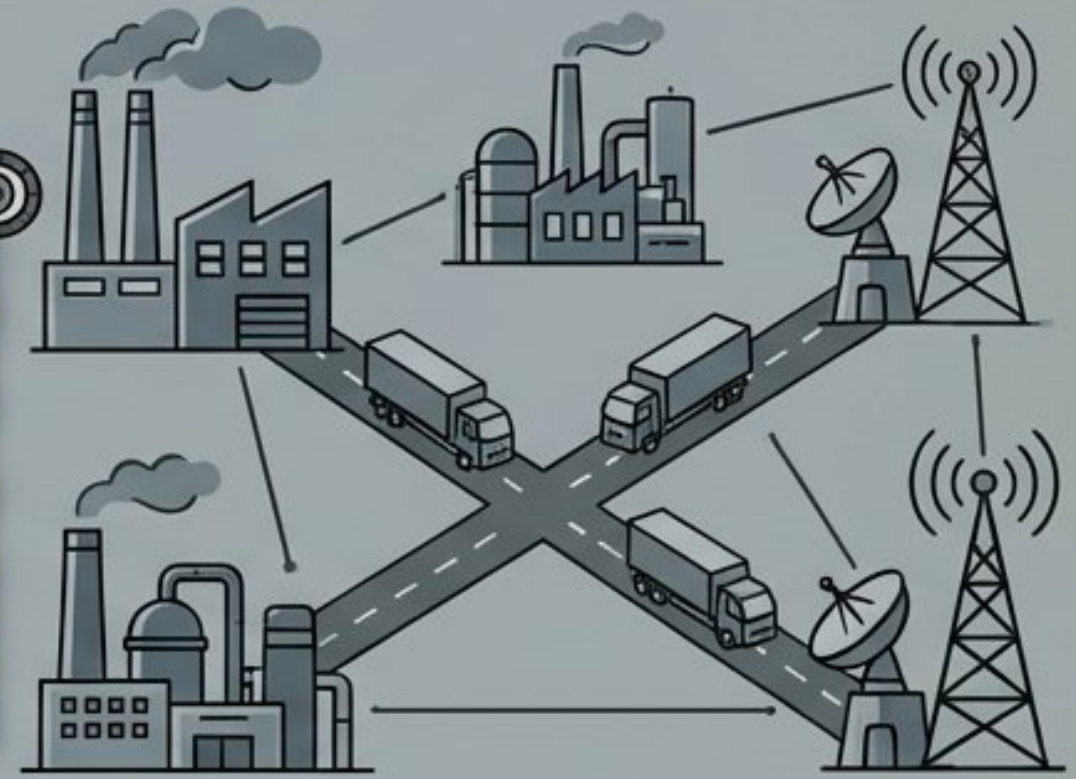


The Farm (Capital-Intensive Inputs)



Large land tracts, single-crop focus,
and large migrant labour forces.

The Industry (Processing & Market)



Factories, transport networks,
and direct market integration.

Insight
Plantations are not just farms;
they are closed-loop industrial
ecosystems where all produce
is used as raw material in
respective industries.



Tea
(Assam/North Bengal)



Coffee
(Karnataka)



Rubber



Sugarcane



Banana

Kharif (Monsoon)

- **Window:** Sown Jun/Jul (onset of monsoon) → Harvested Sep/Oct.



- **Key Crops:** Paddy, maize, jowar, bajra, cotton, jute, groundnut.

Note: Assam, West Bengal, Odisha grow three paddy crops a year: Aus, Aman, and Boro.

Rabi (Winter)

- **Window:** Sown Oct-Dec → Harvested Apr-Jun.



- **Key Crops:** Wheat, barley, peas, gram, mustard.

Climatic Driver:
Aided by winter precipitation from western temperate cyclones.

Zaid (Summer)

- **Window:** Short summer gap between Rabi and Kharif.



- **Key Crops:** Watermelon, muskmelon, cucumber, vegetables, fodder.
- **Key Crops:** Watermelon, muskmelon, cucumber, vegetables, fodder.



RICE

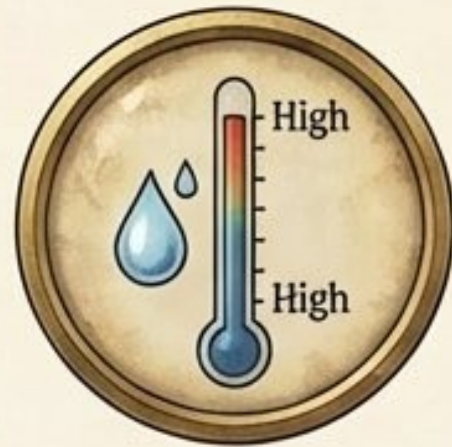
Staple for the majority; India is the world's 2nd largest producer. (Kharif)



> 25°C



> 100cm



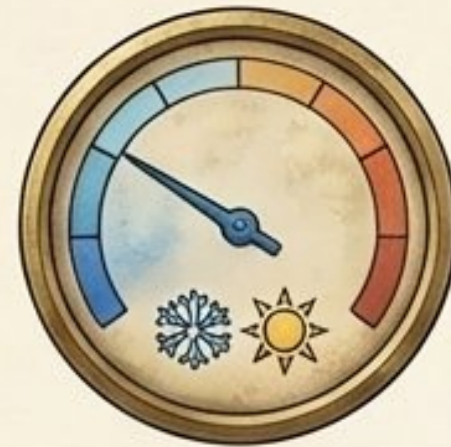
High



Kharif (Monsoon) Crop

WHEAT

2nd most important cereal; main staple in north/north-west. (Rabi)



Cool growing season



Bright sunshine for ripening

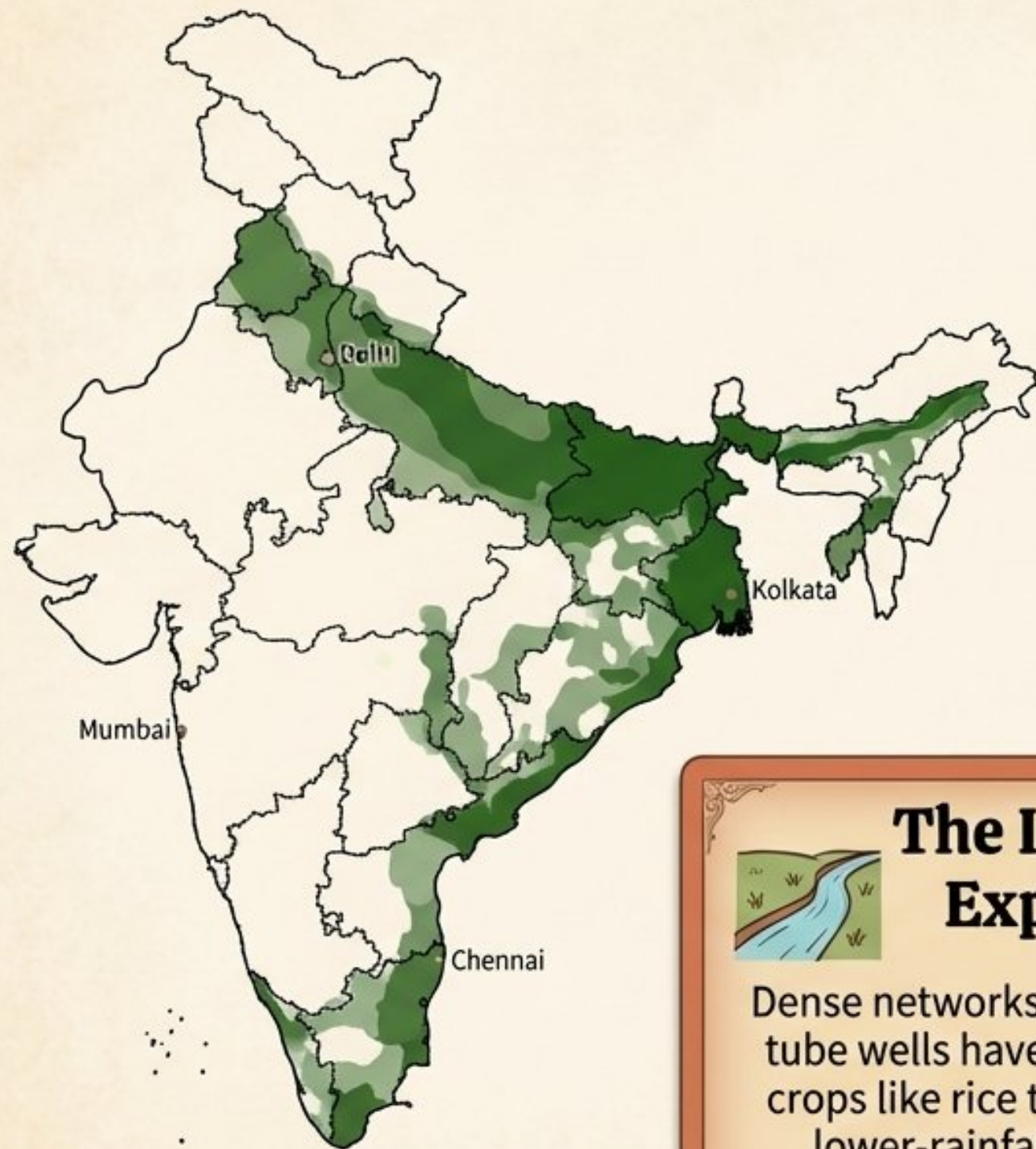


50-75cm (evenly distributed)



Rabi (Winter) Crop

Modern Agrarian Ledger



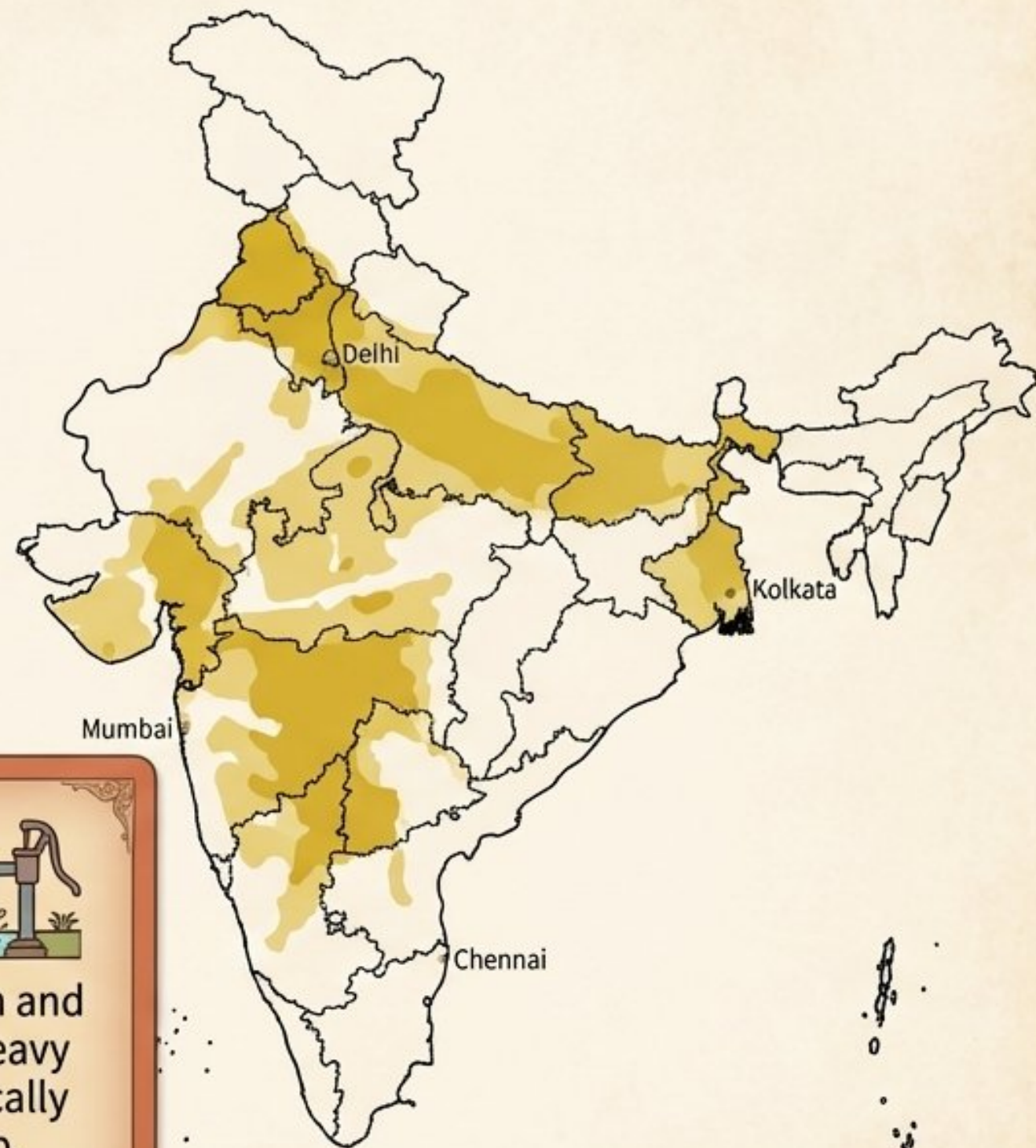
Rice Zones



The Irrigation Expansion



Dense networks of canal irrigation and tube wells have allowed water-heavy crops like rice to thrive in historically lower-rainfall areas like Punjab, Haryana, and Western UP.

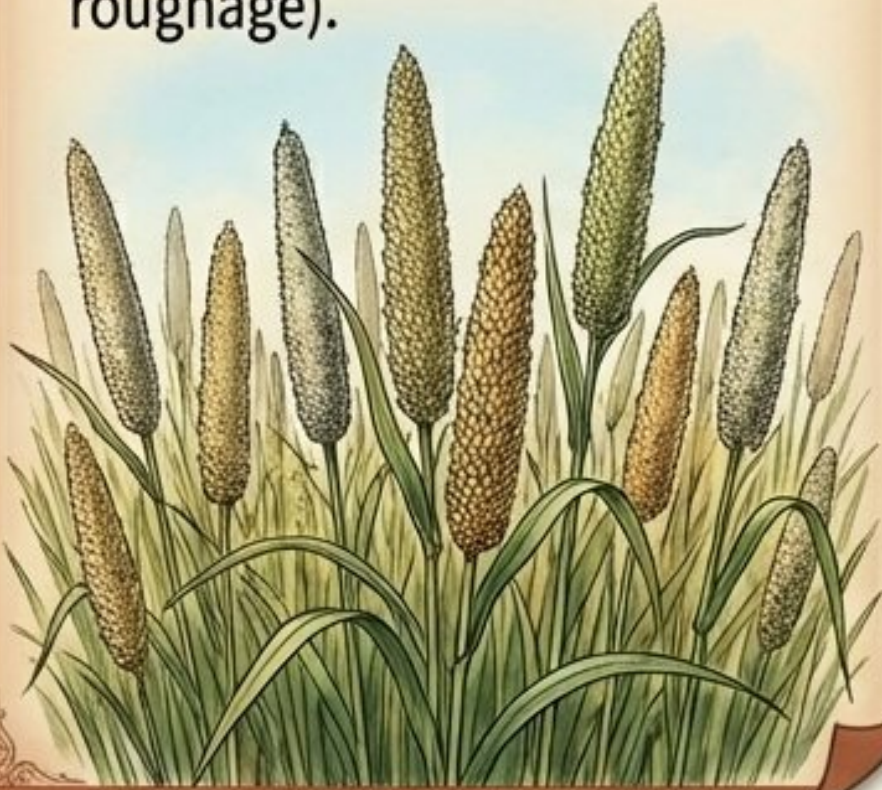


Wheat Zones

Modern Agrarian Ledger

Millets (Coarse Grains)

- **Jowar:** 3rd most important food crop, rain-fed/moist areas.
- **Bajra:** Sandy/shallow black soils (Rajasthan, UP).
- **Ragi:** Dry regions, highly nutritious (iron, calcium, roughage).



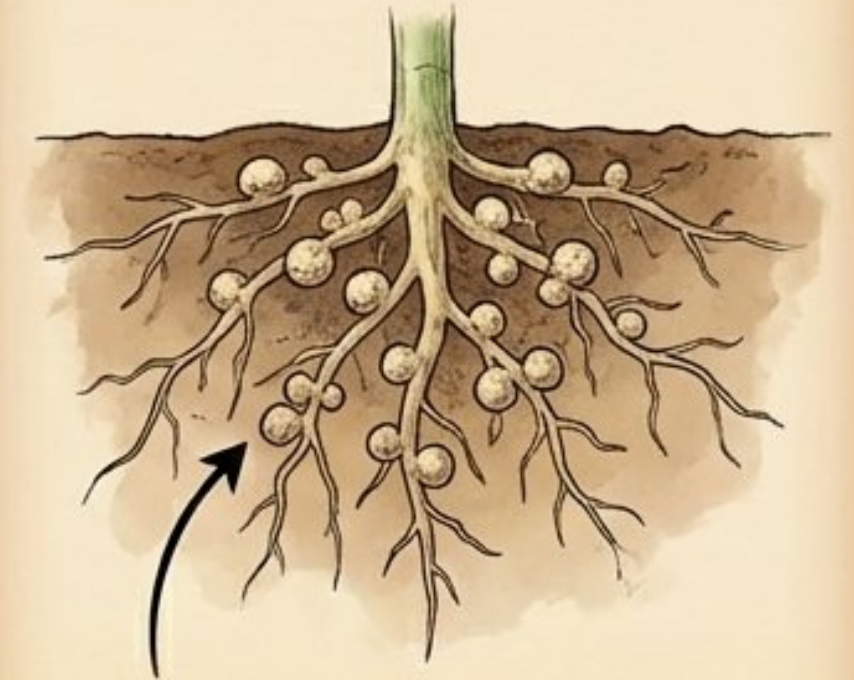
Maize (Food & Fodder)

- **Requirements:** Kharif crop, 21°C–27°C, old alluvial soil.
- **Growth Factor:** Heavily boosted by HYV seeds, fertilisers, and irrigation.



Pulses (The Soil Restorers)

- **Status:** India is the largest producer and consumer. Major vegetarian protein source.



Ecological Role: Leguminous plants fix nitrogen from the air to restore soil fertility (Note: Arhar is the exception). Needs less moisture; survives dry conditions.

Modern Agrarian Ledger

Sugarcane

- Tropical/sub-tropical. 21°C–27°C, 75–100cm rain.
- Highly manual labour.
- India is the 2nd largest producer. Yields sugar, gur, khandsari, molasses.



Jute (“The Golden Fibre”)

- Grows on well-drained, annually renewed fertile soils in flood plains. Requires high temperature during growth. Used for gunny bags, ropes, carpets.



Cotton

- Original home of the plant.
- Requires drier Deccan black soil, high temp, light rain, exactly 210 frost-free days, and bright sunshine.
- Kharif crop (6-8 months).



Rubber

- Equatorial crop.
 - Requires a moist, humid climate with >200cm rain and >25°C.
- Crucial industrial raw material
(Grown in Kerala, TN, Garo hills).



Oil Seeds (12% of cropped area)

Groundnut (*Kharif*, accounts for 50% of oilseeds), Mustard (*Rabi*), Sesamum. Used as cooking mediums and raw materials for soap/cosmetics.



Beverages

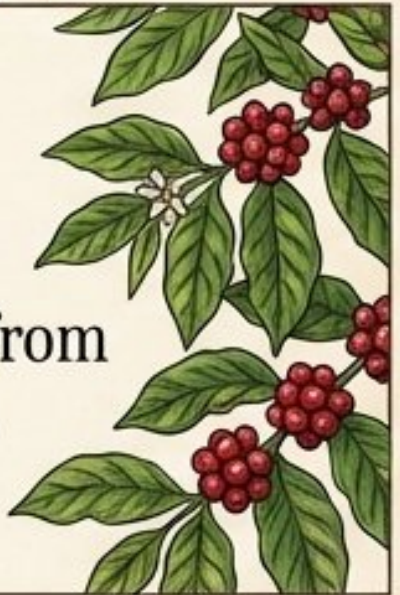
Tea

Requires deep, fertile, well-drained soil rich in humus. Needs warm, moist, frost-free climate with frequent showers.



Coffee

Premium Arabica variety brought from Yemen. Confined to Nilgiri / Baba Budan Hills.



Horticulture

India produces globally demanded tropical and temperate fruits.

[Mangoes - Maharashtra]

[Apples - J&K]

[Pineapples - Meghalaya]



The Legacy Constraints

- Thousands of years of sustained land use without techno-institutional changes.
- Heavy reliance on unpredictable monsoons and natural soil fertility.
- 'Right of Inheritance' causing severe fragmentation and uneconomical land holding sizes.

The Impetus for Reform

- Agriculture provides livelihood for >60% of the population.
- A rapidly growing population demanding vastly higher yields.

The sheer scale of the population rendered traditional, fragmented, monsoon-reliant farming unsustainable, forcing the state to intervene.

Historical Consolidation

Post-independence push for collectivisation, consolidation of holdings, and abolition of zamindari.

Focus of the First Five Year Plan.



The Institutional Shield

The Revolutions (1960s-70s)

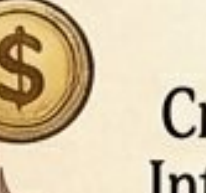
The Green Revolution (package technology) and White Revolution (Operation Flood).

Note: Initially concentrated development in few areas.



Financial & Risk Security

Establishment of Grameen banks.
Crop insurance against drought/flood/fire.
Introduction of Kisan Credit Card (KCC) and Personal Accident Insurance Scheme (PAIS).



Market & Information Defences

Special radio/TV weather bulletins.
Government-announced Minimum Support Price (MSP) and procurement prices to block exploitation by middlemen.



The Blood-less Revolution

1

The Ideology

Following Gandhi's martyrdom, spiritual heir Vinoba Bhave undertakes a padyatra to spread the concept of gram swarajya (village self-rule).



2

The Spark (Pochampally)

Landless villagers demand land. Shri Ram Chandra Reddy spontaneously offers 80 acres to 80 villagers. This act is coined **Bhoodan** (Land Gift).



3

The Scale-Up

Bhave travels India. Zamindars and village owners begin offering entire villages to the landless, a movement known as **Gramdan**.



4

The Catalyst

Many land-owners were also motivated to donate by the fear of impending government land ceiling acts.



The Farmer's Ecosystem



Indian agriculture survives through a delicate equilibrium. The land dictates **WHAT** can grow through rigid climatic laws, but modern institutional safety nets determine **IF** the farmer can survive to grow it again.